

## DAYS' ALMSHOUSE CHARITY

You asked me to write something about the Almshouses opposite the Church in Sarratt.

In 1700 John Baldwin of New House, which I imagine is now known as Goldingtons, granted a piece of land in perpetuity, in length 77 feet and 50 feet in breadth lying near the gate of the Churchyard of Sarratt on the south and a house was built for the poor inhabitants of the parish of Sarratt. In 1821, the Church End Almshouses, said to be in a ruinous condition, were pulled down and six cottages under one roof were rebuilt on the same site at the sole expense of Ralph Day.

I have a document from the Charity Commission sealed 16 JUNE, 1911 which relates to these houses.

There were originally four Charities:

The Church End Almshouses, comprised in Indentures of Lease and Release dated 14<sup>th</sup> and 15<sup>th</sup> March 1788;

The Charity of Henry Day, founded by Codicil to Will proved on 15<sup>th</sup> January, 1819;

The Charity of Ralph Day, founded by Indenture dated 9<sup>th</sup> April 1828; and  
The Charity of Thomas Day, founded by Gift in 1821.

Henry, d. 1818, Ralph, d. 1831 and Thomas Day, d. 1827 were brothers who were born at Sarratt Hall. Ralph Day was my Great, Great, Great Grandfather and his portrait is still at Sarratt Hall.

It was said in 1911 that the Church End Almshouses, now the Day Charity Almshouses, 'shall be appropriated as free residences for deserving and necessitous inhabitants of the Parish of Sarratt to be selected by the Trustees.' If no suitable candidate for occupation is found, or if funds are required for repairing the Almshouses, then a vacant Almshouse may be let. Half of the income was to be spent on the Almshouses and half applied for the benefit of poor people of and resident within the Parish of Sarratt. The income in 1911 was less than £20 per annum!

The Rev. Edward Ryley, in 1910, applied to the Charity Commissioners to 'tidy up' the arrangements by which the Charities were administered. They agreed saying that the Charities shall be administered and managed by the Trustees under the title of the Day Charities. The proceedings of the Trustees as laid out by the Charity Commissioners in 1911 are still followed today.

In 1990 the Scheme was again referred to the Charity Commissioners for an update and it was said that the four original charities would become one for administration purposes to be known as the Day's Almshouse Charity.

The Trustees should be seven competent persons who through residence, occupation or employment have special knowledge of the Parish of Sarratt, including the Incumbent.

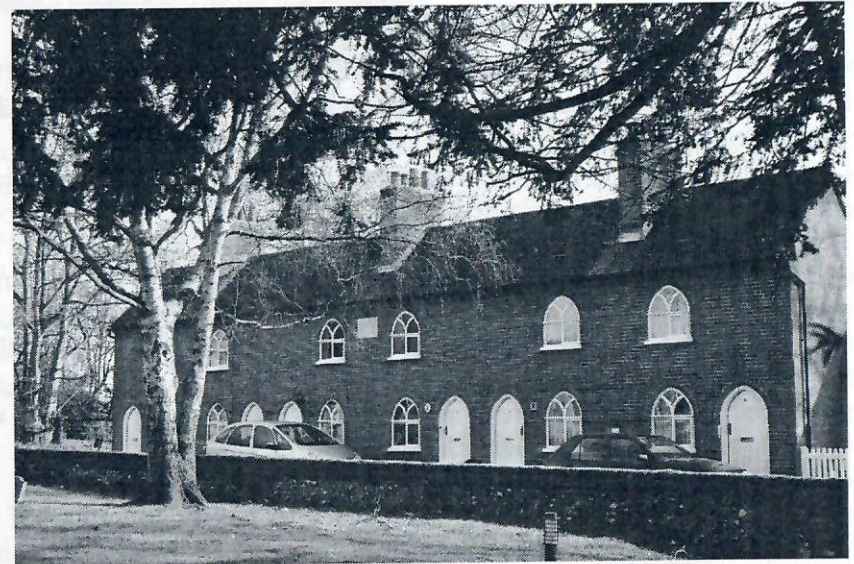
The conditions for entering the Almshouses remain much as before. The residents shall be persons in need and are inhabitants of the Parish of Sarratt. But sadly the almshouses are no longer free!

The Trustees now make it a condition of appointment that the residents:

Contribute a weekly sum towards the cost of maintaining the almshouses and essential services therein; and

Contribute towards the lighting and heating.

If a vacancy occurs, the Trustees must advertise it before any appointment is made and a resident can be asked to leave if they no longer have the required qualifications or are being a nuisance to the other residents. **Joanna Staughton**



## Sarratt Local History Society AGM and talk on London's Underground (special reference to the Met Line) by Tony Earle.

Our Chairman, Pam Turner, gave a very positive annual report at this the 16<sup>th</sup> year of the Society's existence. A very good turnout of members and non-members heard about the series of fascinating talks that our President, Dawn Pitts, had arranged for us during the past year. Pam thanked her for the hard work and organisation which she had put, as usual, into the creation of the programme. Jackie Boughton then presented her Treasurer's report, thankfully in credit unlike so many treasurer's reports this year! The present committee officers and members were duly re-elected and a new young committee member, Gregory Edmund was proposed.